

EXEMPLAR

Young Migrant Integration Leaders

Module 5-Unit 1

**Social Networks &
Engagement Strategies**



HELLO!

ACTIVITY Nr. 1

The portrait game

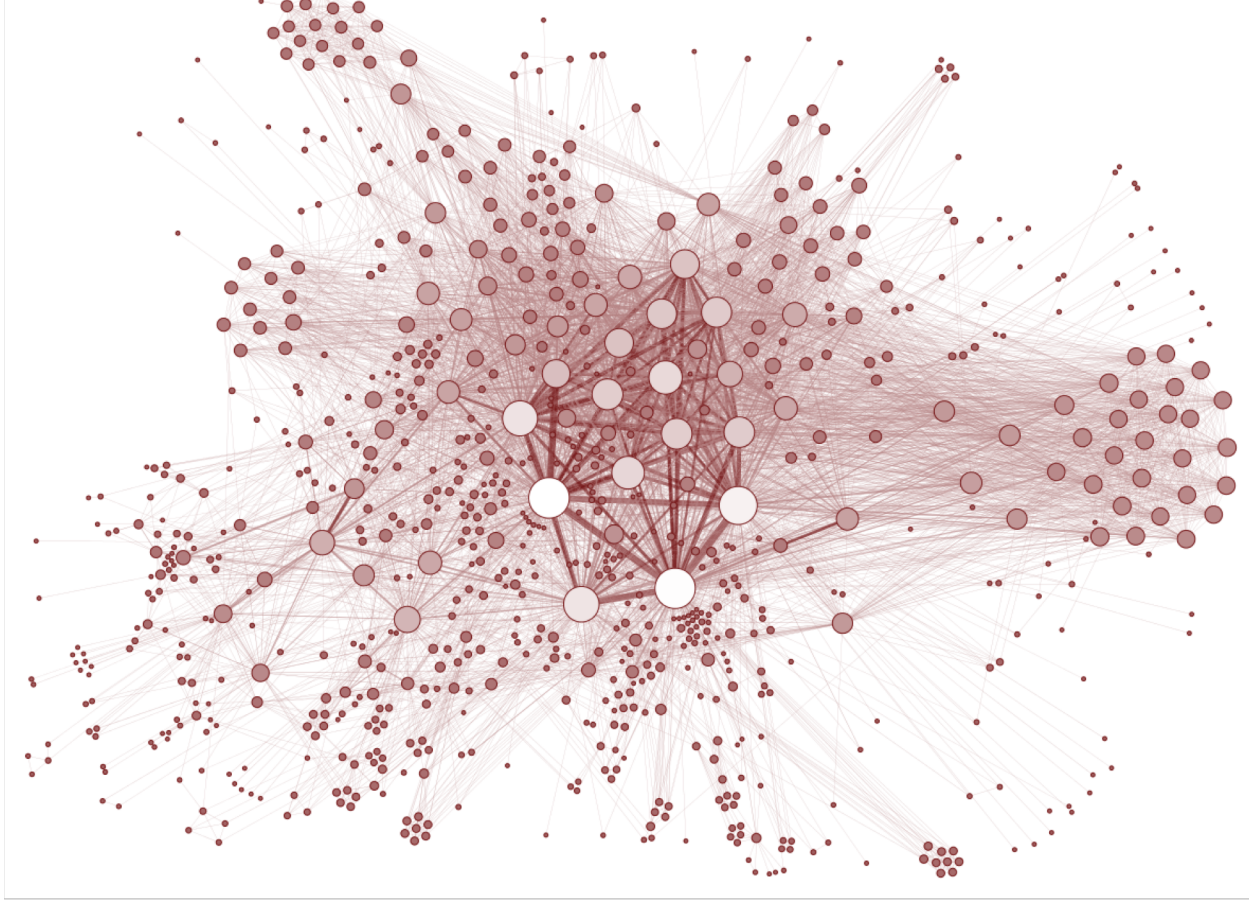


ACTIVITY Nr. 2

Gordian Knot



What is a Social Network?



A social structure composed of interconnected individuals and institutions that shares and distributes information



Offline Network

Online Network



Facebook



Snapchat



Instagram



Twitter



Chrome



Gmail

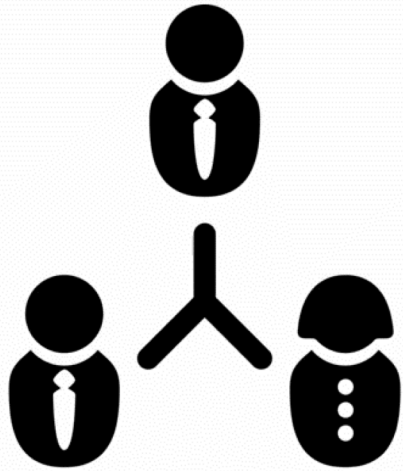


Spotify




Messenger

The Power of Social Networks



**6 degrees of
separation**

What is Engagement?



**Is about creating and maintaining relations with people,
but also motivating them to participate and get involved.**

Participation & Involvement



Two-way Process



Interaction & Listening





R

T

Z

U

I

C

F

W

I

N

W

I

N

V

B

N

M

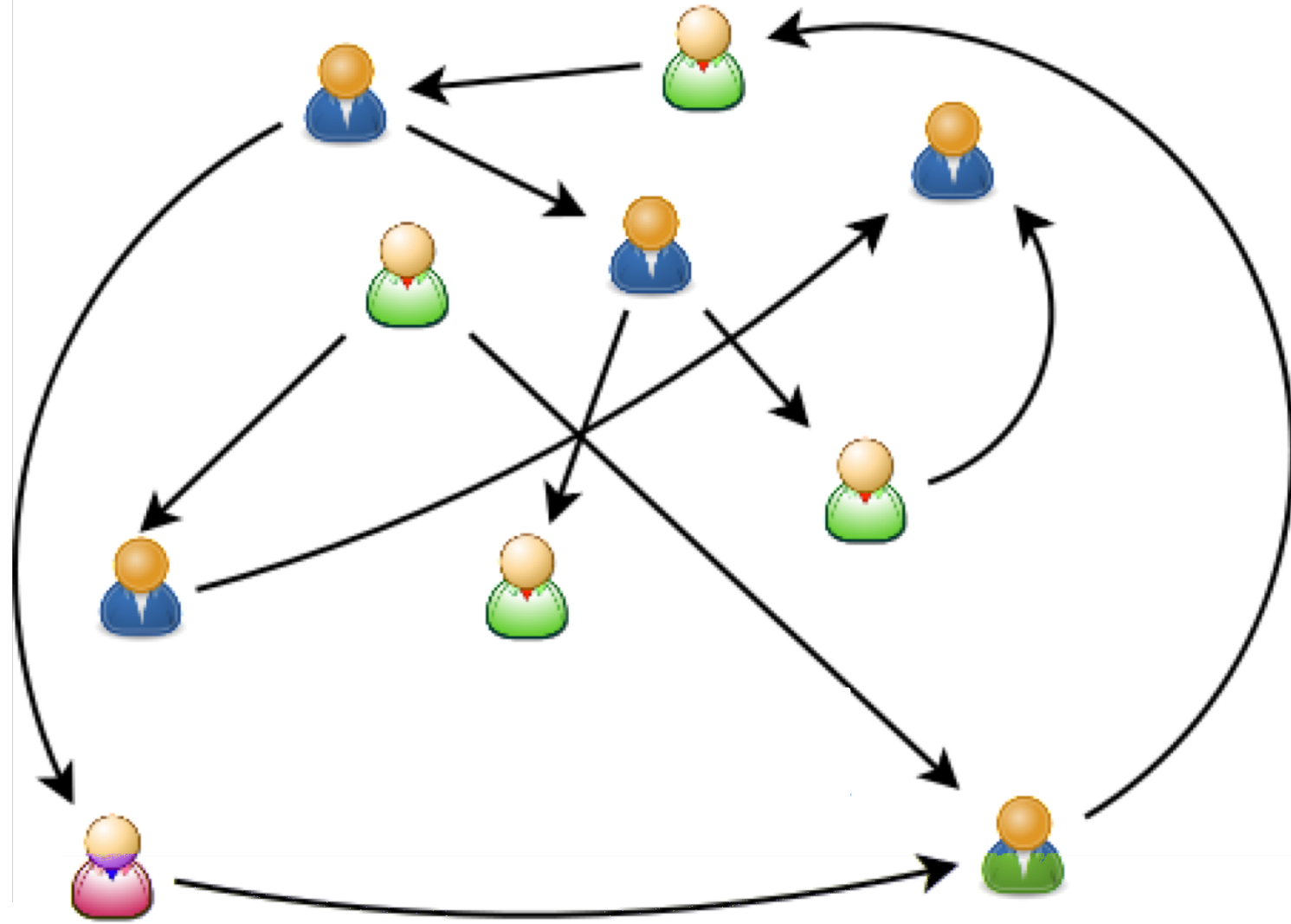
;

μ



exemplar

EXEMPLAR's Meaning of Engagement



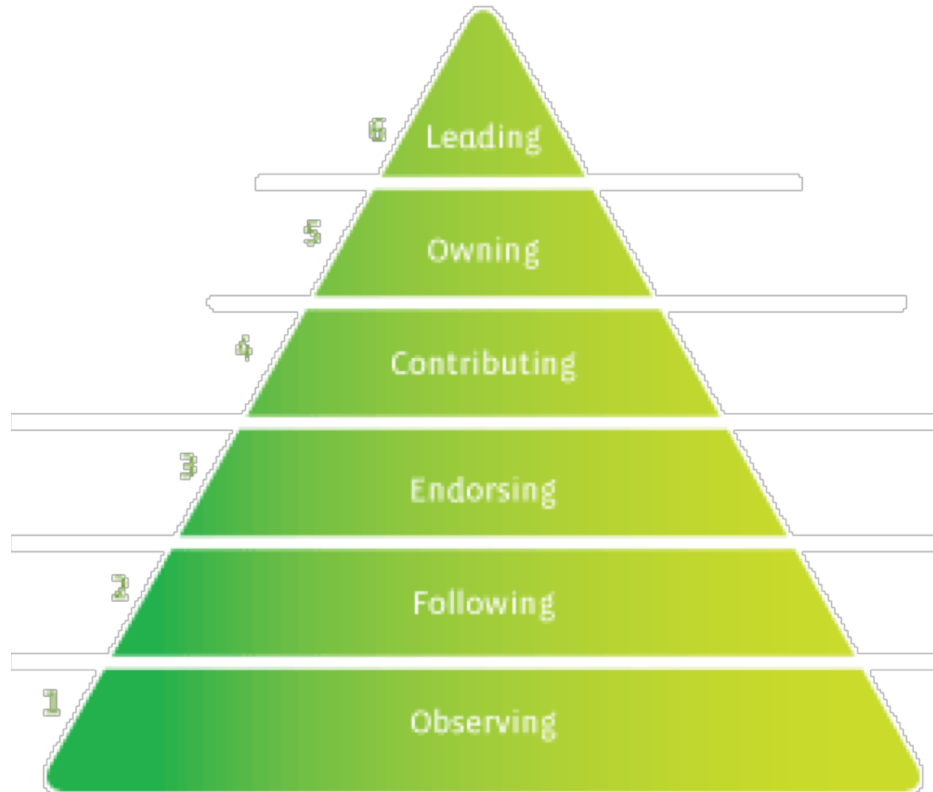


Engagement Strategies

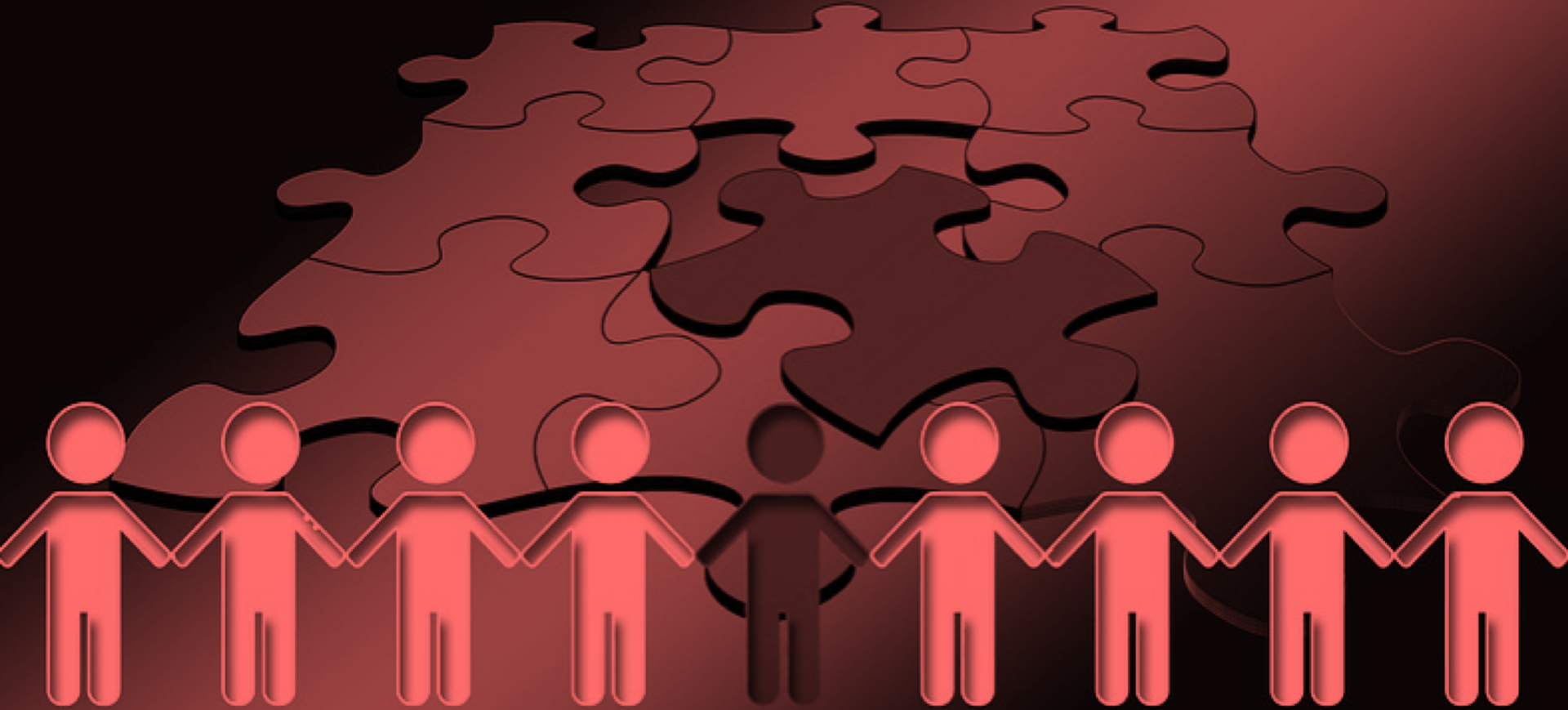
The TIERS Public Engagement Framework



The Engagement Pyramid Framework

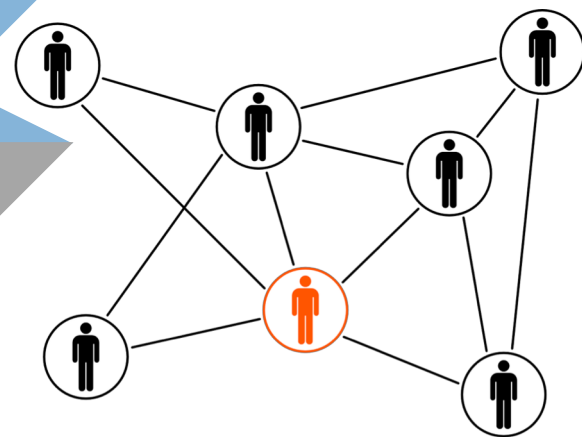


Integration & Customisation



ACTIVITY Nr. 4

Draw your personal network card





exemplar



SUSTAINABLE EDUCATION
SEAL
CYPRUS
ACTIVE LEARNING



HUBKARELIA



The Rural Hub

