

# EXEMPLAR

**Vertaisohjaajien koulutusohjelma**

## Moduuli 1-Osa 2

**Kotoutumisen puitteet**



# Kotoutumisen seurantajärjestelmät



## Regional Data Overview

# Migration data in Europe

*A wide range of migration data is collected and disseminated in Europe at national and, sometimes, sub-national level. Institutional and legal frameworks have been developed by the European Union (EU) with the aim of ensuring that migration data are of high quality, comparable across countries as a result of harmonization (as established in the legal basis), and easily accessible. A continuous process of political dialogue is in place to ensure that the frameworks keep pace with increased demands for information and knowledge.*

[Recent trends](#)

[Past and present trends](#)

[Data sources](#)

[Data strengths & limitations](#)

[Regional processes](#)

[Further reading](#)

Share on



Regional data





**MIGRANT  
INTEGRATION  
POLICY INDEX**  
2015

[ABOUT](#)

[POLICIES](#)

[COUNTRIES](#)

[THE DATA](#)

[NEWS](#)

[BLOG](#)

[CONTACT](#)

# HOW COUNTRIES ARE PROMOTING integration of immigrants



**see**  
key-findings



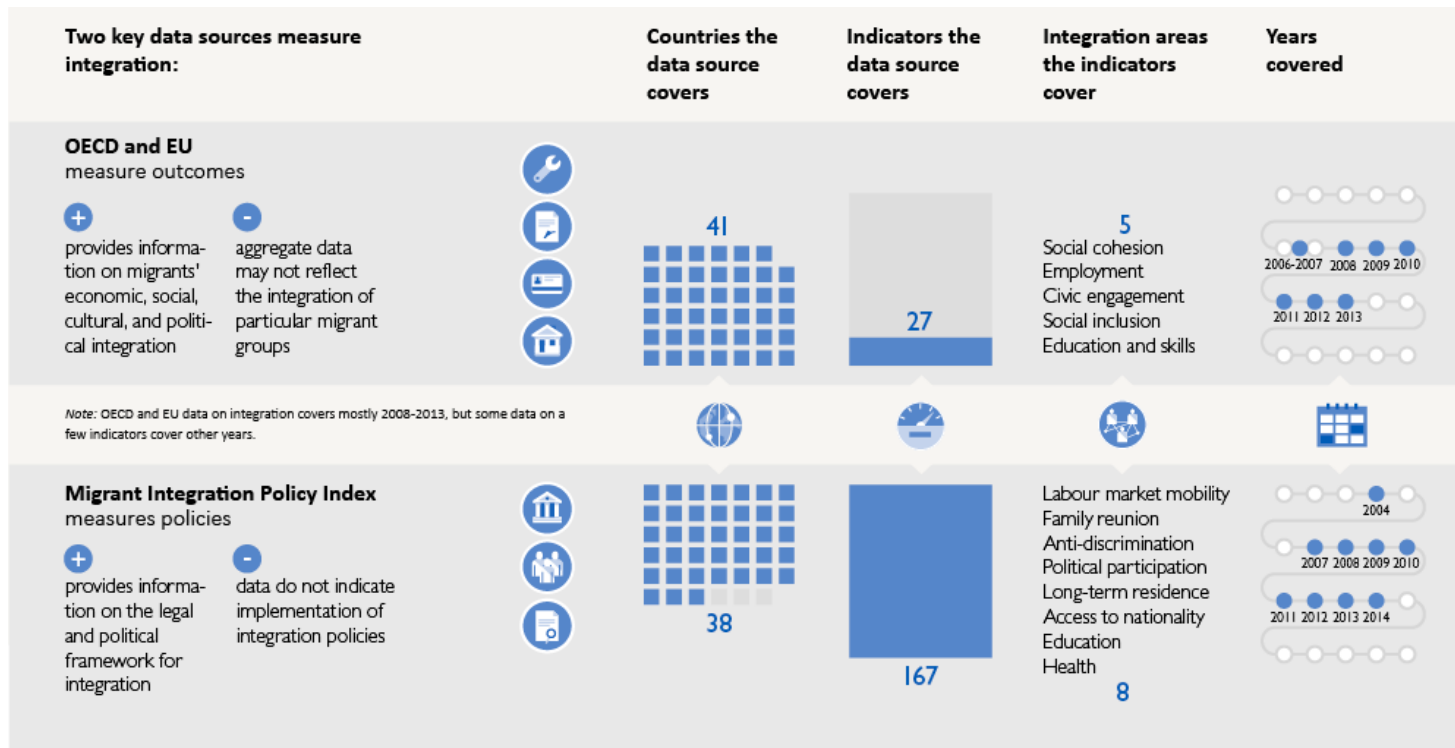
**play**  
with the data



**export**  
the data



# Maahanmuuttajien kotoutumisen mittaaminen



# Maahanmuuttajien kotoutumisen mittaaminen



**Työllisyys**  
**Koulutus**  
**Sosiaalinen osallisuus**  
**Aktiivinen kansalaisuus**  
**Vieraanvarainen yhteiskunta**

[https://ec.europa.eu/home-affairs/sites/homeaffairs/files/e-library/documents/policies/legal-migration/general/docs/final\\_report\\_on\\_using\\_eu\\_indicators\\_of\\_immigrant\\_integration\\_june\\_2013\\_en.pdf](https://ec.europa.eu/home-affairs/sites/homeaffairs/files/e-library/documents/policies/legal-migration/general/docs/final_report_on_using_eu_indicators_of_immigrant_integration_june_2013_en.pdf)



# HARJOITUS 1

## Henkilökohtainen laatikkoni





# HARJOITUS 2

**Roolipeli; kotoutuminen ja  
minä**



# HARJOITUS 3

## Täydellinen päivä



feedback



**EVALUATION**

**EVALUATION**



exemplar

