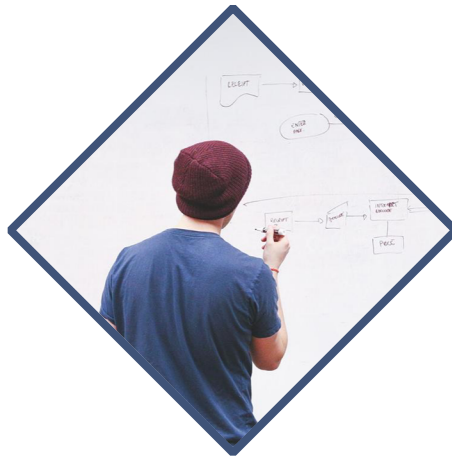


EXEMPLAR

Vertaisohjaajien koulutusohjelma

Moduuli 1-Osa 2

Kotoutumisen puitteet



HEI TAAS!

Kotoutumisen seurantajärjestelmät



Regional Data Overview

Migration data in Europe

A wide range of migration data is collected and disseminated in Europe at national and, sometimes, sub-national level. Institutional and legal frameworks have been developed by the European Union (EU) with the aim of ensuring that migration data are of high quality, comparable across countries as a result of harmonization (as established in the legal basis), and easily accessible. A continuous process of political dialogue is in place to ensure that the frameworks keep pace with increased demands for information and knowledge.

[Recent trends](#)

[Past and present trends](#)

[Data sources](#)

[Data strengths & limitations](#)

[Regional processes](#)

[Further reading](#)

Share on



Regional data





**MIGRANT
INTEGRATION
POLICY INDEX**
2015

[ABOUT](#)

[POLICIES](#)

[COUNTRIES](#)

[THE DATA](#)

[NEWS](#)

[BLOG](#)

[CONTACT](#)

HOW COUNTRIES ARE PROMOTING integration of immigrants



see
key-findings



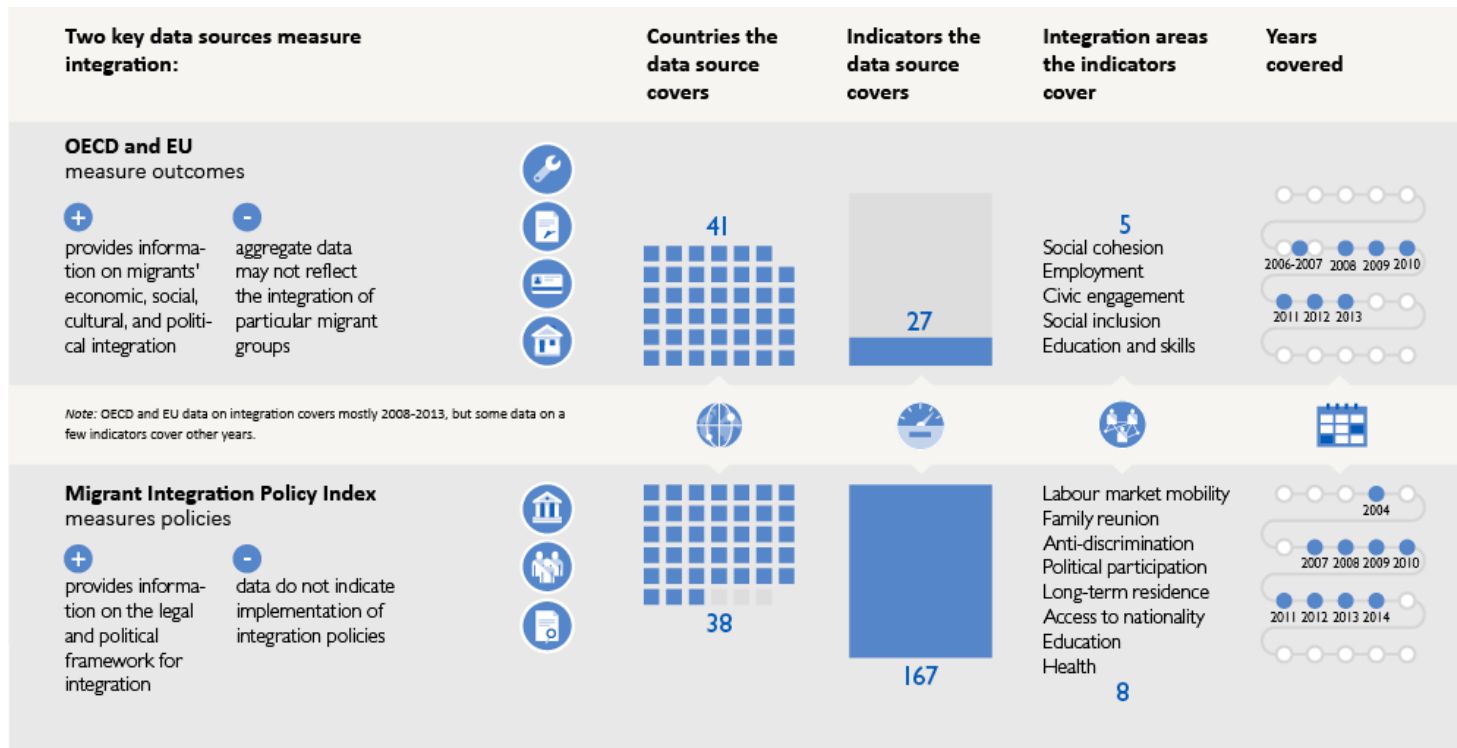
play
with the data



export
the data



Maahanmuuttajien kotoutumisen mittaaminen



Maahanmuuttajien kotoutumisen mittaaminen



Työllisyys
Koulutus
Sosiaalinen osallisuus
Aktiivinen kansalaisuus
Vieraanvarainen yhteiskunta

https://ec.europa.eu/home-affairs/sites/homeaffairs/files/e-library/documents/policies/legal-migration/general/docs/final_report_on_using_eu_indicators_of_immigrant_integration_june_2013_en.pdf



HARJOITUS 1

Henkilökohtainen laatikkoni



HARJOITUS 2

**Roolipeli; kotoutuminen ja
minä**



HARJOITUS 3

Täydellinen päivä



feedback



EVALUATION

EVALUATION



exemplar



SUSTAINABLE EDUCATION
SEAL
CYPRUS
ACTIVE LEARNING



HUBKARELIA

INNEO

The Rural Hub

