

EXEMPLAR

**Junge IntegrationsleiterInnen
mit Migrationshintergrund**

Modul 1-Kapitel 2

**Der Gesamtrahmen der
Integration**



**HALLO WIEDER
EINMAL!**



exemplar

Integrations- Beobachtungssysteme



Erasmus+



Regional Data Overview

Migration data in Europe

A wide range of migration data is collected and disseminated in Europe at national and, sometimes, sub-national level. Institutional and legal frameworks have been developed by the European Union (EU) with the aim of ensuring that migration data are of high quality, comparable across countries as a result of harmonization (as established in the legal basis), and easily accessible. A continuous process of political dialogue is in place to ensure that the frameworks keep pace with increased demands for information and knowledge.

[Recent trends](#)

[Past and present trends](#)

[Data sources](#)

[Data strengths & limitations](#)

[Regional processes](#)

[Further reading](#)

Share on



Regional data





**MIGRANT
INTEGRATION
POLICY INDEX**
2015

[ABOUT](#)

[POLICIES](#)

[COUNTRIES](#)

[THE DATA](#)

[NEWS](#)

[BLOG](#)

[CONTACT](#)

HOW COUNTRIES ARE PROMOTING integration of immigrants



see
key-findings



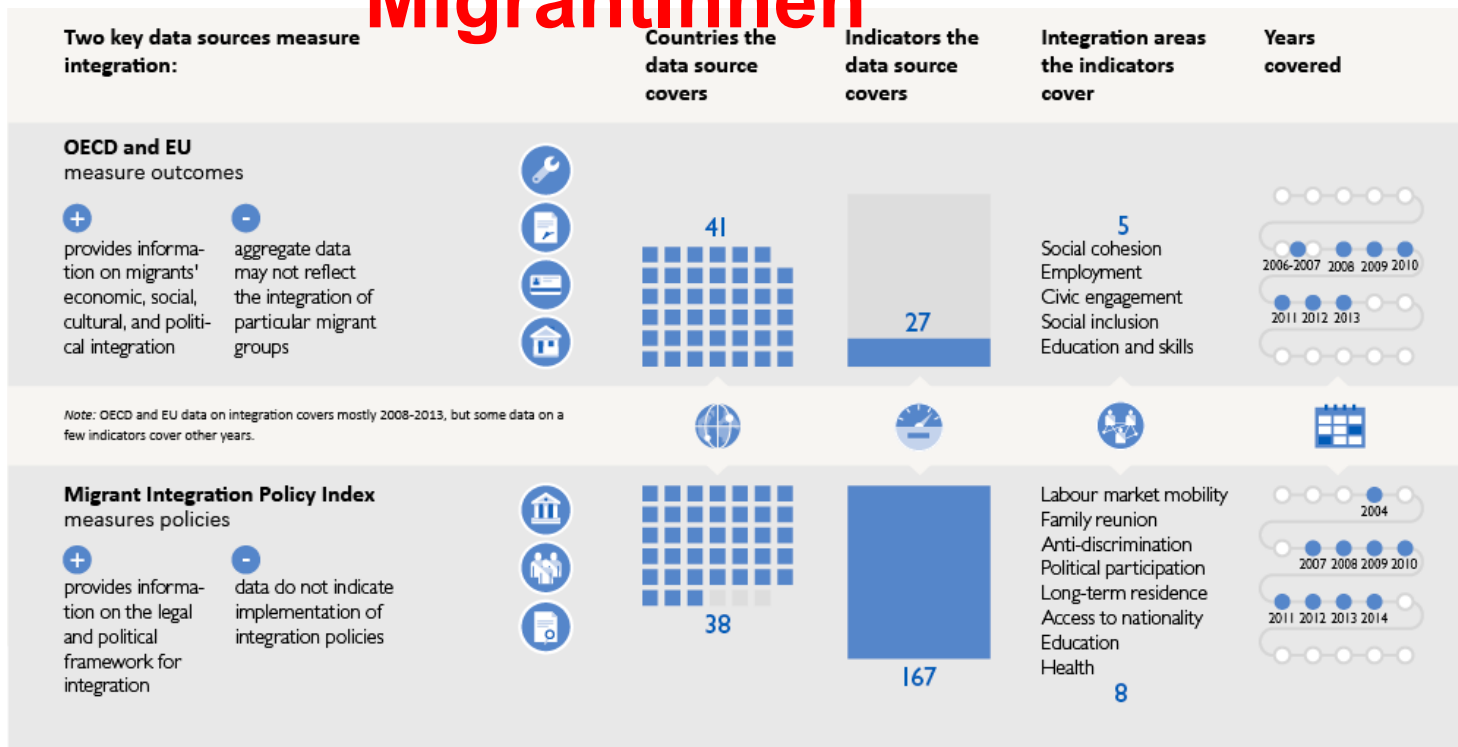
play
with the data



export
the data



Messung der Integration von MigrantInnen



Source: Own elaboration based on OECD and EU, 2015; MIPEX, 2012 and 2015.

Messung der Integration von MigrantInnen



**Beschäftigung
Ausbildung
Soziale Eingliederung
Aktive Bürgerschaft
Aufnahmegesellschaft**

AKTIVITÄT Nr. 1

Meine Biografiebox



AKTIVITÄT Nr. 2

Rollenspiel "Integration und ich"



AKTIVITÄT Nr. 3

Ein perfekter Tag



feedback



EVALUATION

EVALUATION



exemplar

