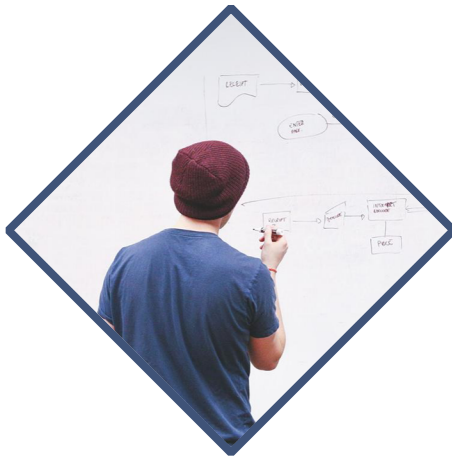


# EXEMPLAR

**Mladí migrantští integrační  
leaderi**

## Modul 1-Lekce 2

**Integrační rámec**



# DOBŘÝ DEN!

# Integrační monitorovací systémy



## Regional Data Overview

# Migration data in Europe

*A wide range of migration data is collected and disseminated in Europe at national and, sometimes, sub-national level. Institutional and legal frameworks have been developed by the European Union (EU) with the aim of ensuring that migration data are of high quality, comparable across countries as a result of harmonization (as established in the legal basis), and easily accessible. A continuous process of political dialogue is in place to ensure that the frameworks keep pace with increased demands for information and knowledge.*

[Recent trends](#)[Past and present trends](#)[Data sources](#)[Data strengths & limitations](#)[Regional processes](#)[Further reading](#)

Share on



Regional data





**MIGRANT  
INTEGRATION  
POLICY INDEX**  
2015

[ABOUT](#)

[POLICIES](#)

[COUNTRIES](#)

[THE DATA](#)

[NEWS](#)

[BLOG](#)

[CONTACT](#)

# HOW COUNTRIES ARE PROMOTING integration of immigrants



**see**  
key-findings



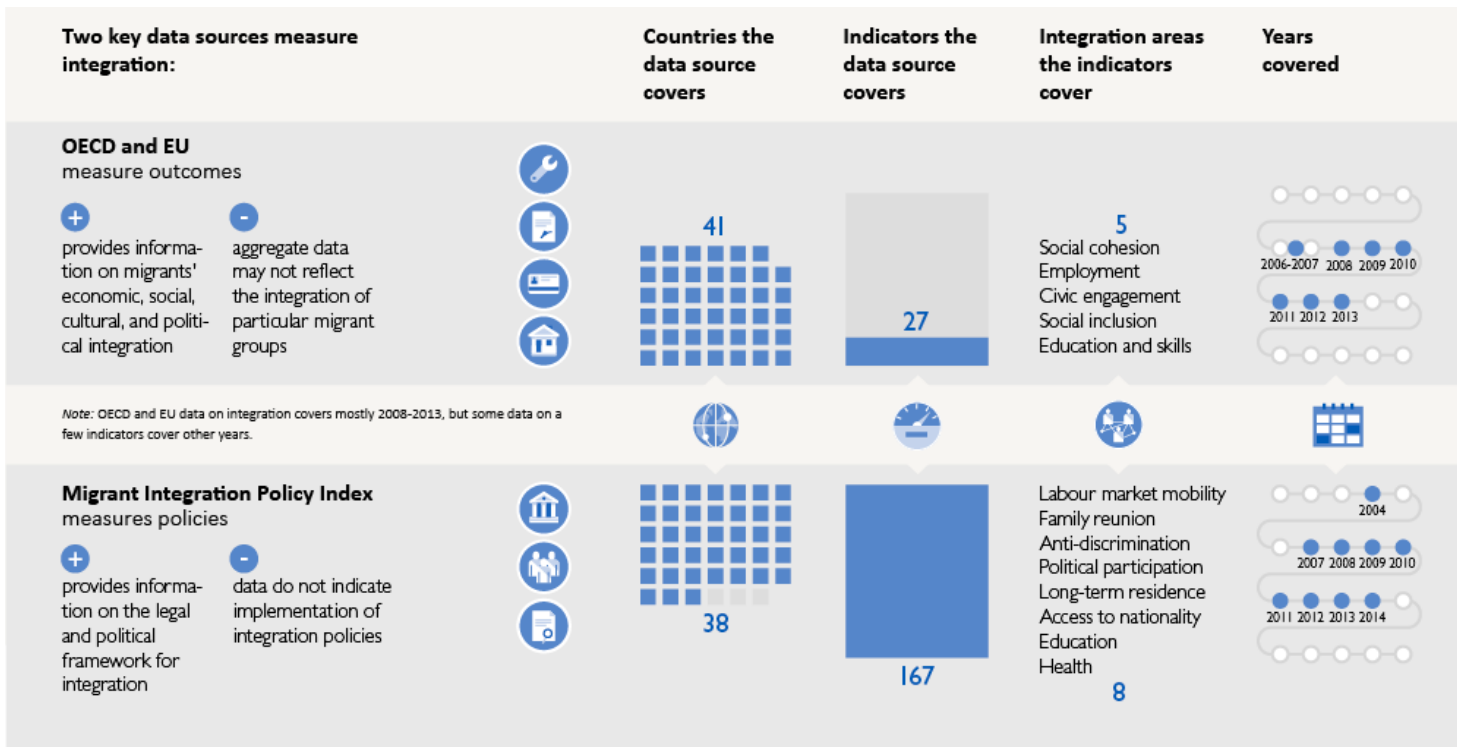
**play**  
with the data



**export**  
the data



# Měření integrace migrantů



Source: Own elaboration based on OECD and EU, 2015; MIPEX, 2012 and 2015.

© IOM's GMDAC 2017 [www.migrationdataportal.org](http://www.migrationdataportal.org)

# Měření integrace migrantů



**Zaměstnanost**  
**Vzdělání**  
**Sociální inkluze**  
**Aktivní občanství**  
**Přívětivá společnost**

# AKTIVITA č. 1

## Moje biografická krabice





## AKTIVITA č. 2

### Role play Integrace a já



# AKTIVITA č. 3

## Perfektní den



feedback



**EVALUATION**

**EVALUATION**



exemplar

