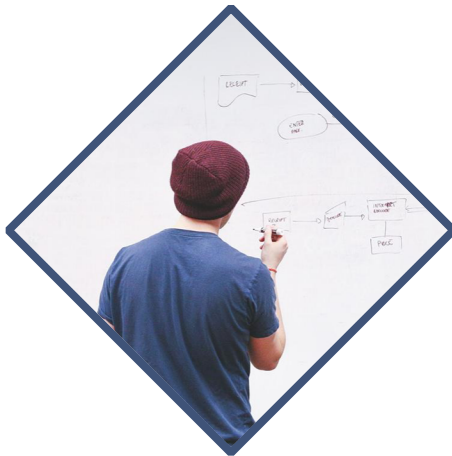


EXEMPLAR

**Mladí migrantští integrační
leaderi**

Modul 1-Lekce 2

Integrační rámec



DOBRY DEN!

Integrační monitorovací systémy



Regional Data Overview

Migration data in Europe

A wide range of migration data is collected and disseminated in Europe at national and, sometimes, sub-national level. Institutional and legal frameworks have been developed by the European Union (EU) with the aim of ensuring that migration data are of high quality, comparable across countries as a result of harmonization (as established in the legal basis), and easily accessible. A continuous process of political dialogue is in place to ensure that the frameworks keep pace with increased demands for information and knowledge.

[Recent trends](#)

[Past and present trends](#)

[Data sources](#)

[Data strengths & limitations](#)

[Regional processes](#)

[Further reading](#)

Share on



Regional data





**MIGRANT
INTEGRATION
POLICY INDEX**
2015

[ABOUT](#)

[POLICIES](#)

[COUNTRIES](#)

[THE DATA](#)

[NEWS](#)

[BLOG](#)

[CONTACT](#)

HOW COUNTRIES ARE PROMOTING integration of immigrants



see
key-findings



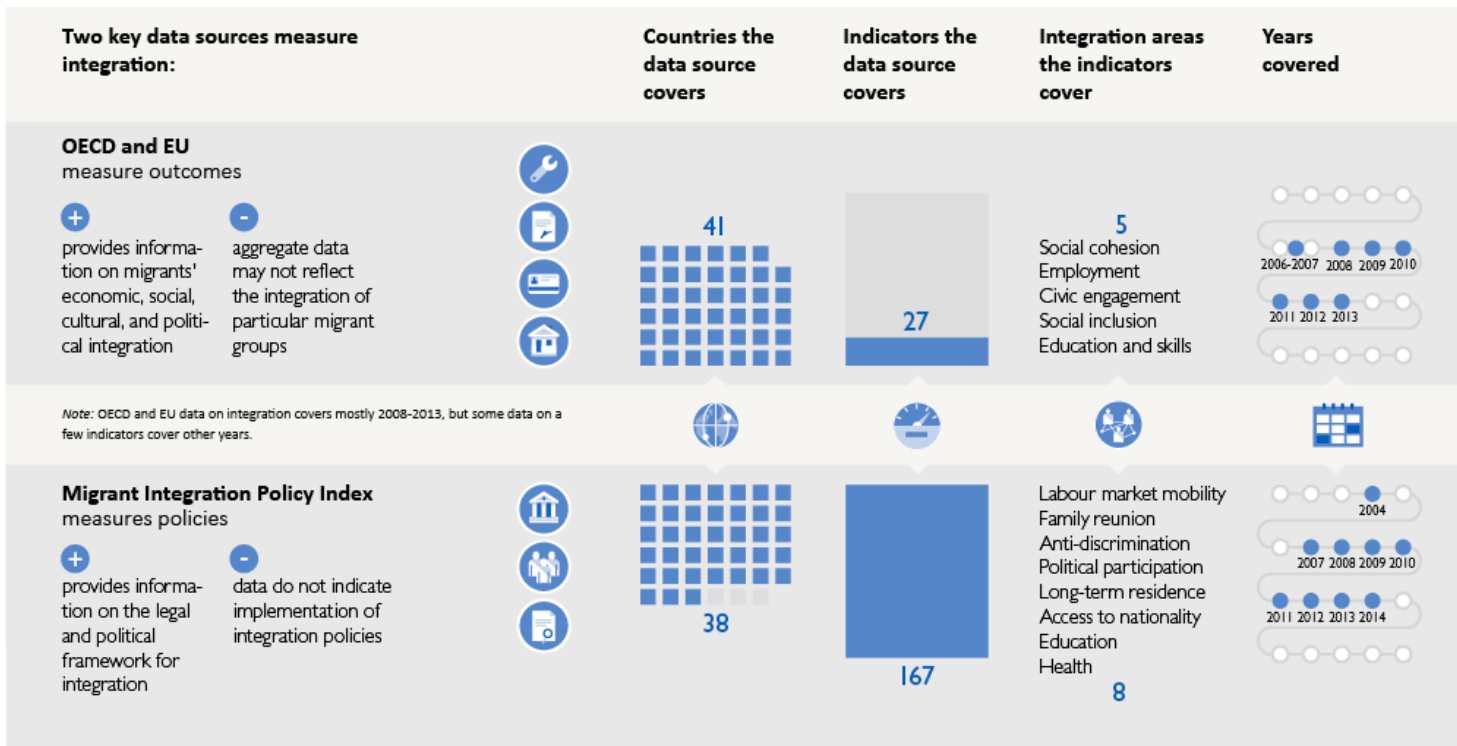
play
with the data



export
the data



Měření integrace migrantů



Source: Own elaboration based on OECD and EU, 2015; MIPEX, 2012 and 2015.

© IOM's GMDAC 2017 www.migrationdataportal.org

Měření integrace migrantů



Zaměstnanost
Vzdělání
Sociální inkluze
Aktivní občanství
Přívětivá společnost

AKTIVITA č. 1

Moje biografická krabice



AKTIVITA č. 2

Role play Integrace a já



AKTIVITA č. 3

Perfektní den



feedback



EVALUATION

EVALUATION



exemplar



SUSTAINABLE EDUCATION
SEAL
CYPRUS
ACTIVE LEARNING



HUBKARELIA

INNEO

The Rural Hub



This project has been funded with support from the European Commission.
This publication reflects the views only of the author, and the Commission cannot be held responsible for any use which may be made of the information contained therein.